

PINWALL

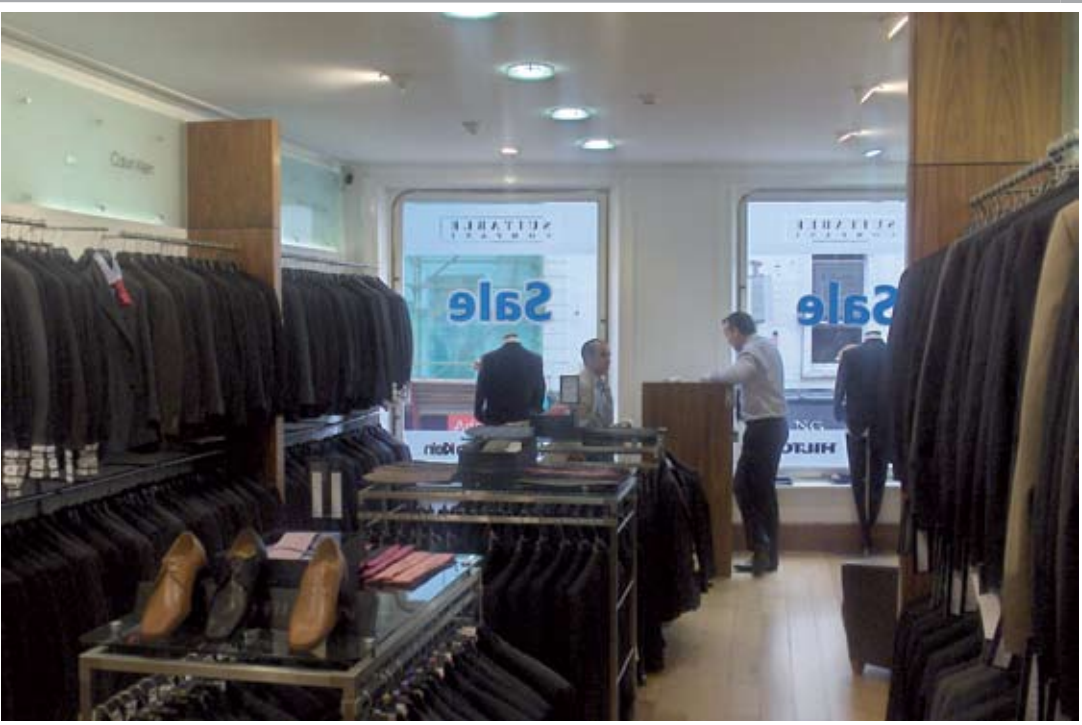




Evita, Naas, Co. Kildare



Joi, Castleisland, Co. Cork



Suitable Company, Grafton St. Dublin



Paco Store, Nationwide



Champion Sports, Nationwide



Champion Sports, Nationwide



Therapy for Girls, Cork



3G Store, Nationwide

Pinwall Panel

	Size:	Finish:	Code:
14 ferrules.	cm 60x240h	Satin colours	SLP-01-01
		High gloss colours	SLP-01-10

Pinwall Panel

	Size:	Finish:	Code:
14 Ferrules.	cm 60x240h	Timber veneers	SLP-01-20

Pinwall Panel

	Size:	Finish:	Code:
28 Ferrules.	cm 120x2400h	Satin colours	SLP-02-01
		High gloss colours	SLP-02-10

Pinwall Panel

	Size:	Finish:	Code:
28 Ferrules.	cm 120x240h	Timber veneers	SLP-02-20

Pinwall Panel

	Size:	Finish:	Code:
Wave shaped	cm 60x2400h	Satin colours	SLP-05-01
Pinwall panel.		High gloss colours	SLP-05-10
14 Ferrules.			

Pinwall Panel

	Size:	Finish:	Code:
Pinwall accessory	cm 60x240h	Satin colours	SLMP-01-01
panel.	cm 60x240h	High gloss colours	SLMP-01-10
For use with SL-03	cm 60x240h	Timber veneers	SLMP-01-20

Mini arms.

Pinwall Timber Upright

	Size:	Finish:	Code:
14 Ferrules.	cm 5x10x240h	Timber veneers	SLU-01-20
		Hardwood timbers	SLU-01-30

Pinwall Metal Upright

	Size:	Finish:	Code:
15 Ferrules	Height 2400mm	Silver	SLU-01-40
16 Ferrules	Height 3000mm	Silver	SLU-02-40

Pinwall Acrylic Accessory Panel

	Size:	Finish:	Code:
Acrylic slotted	cm 120x60h	Clear acrylic	SLP-04-50

panel.
Fitted to ferrules
with vertical panel
support arms or
SL-05

Pinwall Ferrule

	Size:	Finish:	Code:
Ferrule with nut and washer.	Panel hole Ø20mm	Aluminium	SL-01



Pinwall Mini Ferrule

	Size:	Finish:	Code:
For lightweight & accessory merchandising.	Takes Ø 8mm arm.	Aluminium	SL-02
	Panel hole Ø 9mm		

Pinwall Plug



	Size:	Finish:	Code:
For use with 2-point connection arms.		Stainless steel	SL-05

Pinwall Plug Adapter



	Size:	Finish:	Code:
Pinwall adapter for Mini arm.	Takes Ø 8mm arm.	Stainless steel	SL-07

Pinwall Mini Arm Ø 8mm



	Size:	Finish:	Code:
For use with SL-02	Length 100mm	Stainless steel	SLA-01-47
	Length 150mm	Stainless steel	SLA-03-47
	Length 200mm	Stainless steel	SLA-05-47
	Length 100mm	Satin chrome	SLA-01-65
	Length 150mm	Satin chrome	SLA-03-65
	Length 200mm	Satin chrome	SLA-05-65

Pinwall Mini Arm Ø 8mm



	Size:	Finish:	Code:
Mini arm with lip.	Length 100mm	Stainless steel	SLA-02-47
For use with SL-02	Length 150mm	Stainless steel	SLA-04-47
	Length 200mm	Stainless steel	SLA-06-47
	Length 100mm	Satin chrome	SLA-02-65
	Length 150mm	Satin chrome	SLA-04-65
	Length 200mm	Satin chrome	SLA-06-65

Pinwall Straight Rail

	Size:	Finish:	Code:
Suitable for side hanging.	Length 1200mm	Stainless steel	SLR-01-47
	Depth 300mm	Satin chrome	SLR-01-65

Pinwall T-Arm

	Size:	Finish:	Code:
Suitable for side hanging. Requires SL-05.	Width 600mm	Stainless steel	SLA-10-47
	Depth 300mm	Satin chrome	SLA-10-65

Pinwall Straight Arm Ø 25

	Size:	Finish:	Code:
Suitable for forward hanging.	Length 300mm	Stainless steel	SLA-15-47
		Satin chrome	SLA-15-65

Pinwall Slim Straight Arm Ø 14

	Size:	Finish:	Code:
Sleeker style forward arm for lighter garments & lingerie.	Length 300mm	Stainless steel	SLA-17-47
		Satin chrome	SLA-17-65

Pinwall Slim 2-Step Arm Ø 14

	Size:	Finish:	Code:
Define styles/ colours on a single arm.	Length 300mm	Stainless steel	SLA-18-47
	Height 140mm	Satin chrome	SLA-18-65



Pinwall Slim Sloped Arm Ø 14

	Size:	Finish:	Code:
Define styles/ colours on a single arm.	Length 320mm Height 140mm	Stainless steel Satin chrome	SLA-19-47 SLA-19-65
Ideal for kids & lingerie.			



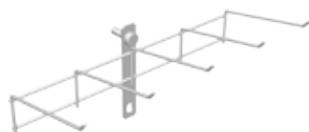
Pinwall Twin Cap Holder

	Size:	Finish:	Code:
Suitable for peaked caps.	Width 600mm	Stainless steel Satin chrome	SLA-25-47 SLA-25-65
Requires SL-05.			



Pinwall Co-Ordinate Arm Ø 14

	Size:	Finish:	Code:
Forward and side hanging on one arm	Width 600mm	Stainless steel Satin chrome	SLA-26-47 SLA-26-65
Ideal for kids & lingerie.			
Requires SL-05.			



Pinwall Accessory Arm 5 Prong

	Size:	Finish:	Code:
Suitable for jewellery, scarfs & blister-packs.	Width 600mm Suitable for accessories up to 115mm Wide.	Stainless steel Satin chrome	SLA-27-47 SLA-27-65
Requires SL-05.			



Pinwall Twin Ball Holder

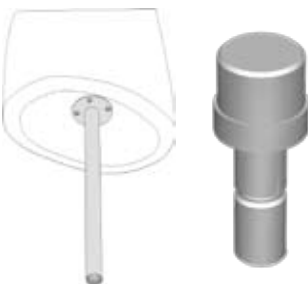
	Size:	Finish:	Code:
Suitable for Sports balls & accessories.	Width 600mm Ring Ø134mm	Stainless steel Satin chrome	SLA-28-47 SLA-28-65

Pinwall Shelf Bracket Ø 14



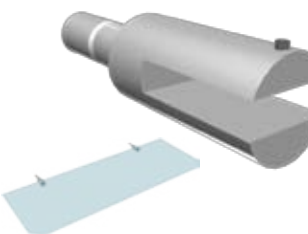
	Size:	Finish:	Code:
Suitable for	Width 450mm	Stainless steel	SLB-04-47
600mm Wide Shelf Depth 300mm		Satin chrome	SLB-04-65
Requires SL-05.			

Pinwall Tube Adapter



	Size:	Finish:	Code:
Suitable for busts	Fits tube Ø 25mm	Stainless steel	SLB-05
& mannequins.	with 1.5mm wall section.		

Pinwall Shelf Bracket



	Size:	Finish:	Code:
Glass shelf grip	Length 50mm	Aluminium	SLB-06
Grub screw always	Takes shelves up to top.		
	8mm thick.		

Pinwall Vertical Panel Support



	Size:	Finish:	Code:
Suitable for signage	Length 50mm	Aluminium	SLB-07-50
& graphics.	Length 100mm	Aluminium	SLB-08-50
Takes panel	Length 250mm	Aluminium	SLB-09-50
thickness 6 to	Length 50mm	Satin chrome	SLB-07-65
10mm.	Length 100mm	Satin chrome	SLB-08-65
	Length 250mm	Satin chrome	SLB-09-65

Pinwall Mannequin Neck Adapter



	Size:	Finish:	Code:
Fits mannequins	Length 150mm	Stainless steel	SLB-10-47
with a neckplate.		Satin chrome	SLB-10-65



Pinwall Sign Holder Vertical

	Size:	Finish:	Code:
Suitable for	Takes panel	Aluminium	SLB-11-50
gondola tops.	thickness 6mm	Satin chrome	SLB-11-65
2 Brackets			
required to hold			
a sign.			



Pinwall Top Bracket

	Size:	Finish:	Code:
Suitable for	Min. shelf width	Stainless steel	SLB-12-47
gondola tops.	305mm	Satin chrome	SLB-12-65
2 Brackets			
required to hold			
a shelf.			



Pinwall Shelf Bracket Ø 14mm

	Size:	Finish:	Code:
2 brackets	Length 200mm	Stainless steel	SLB-20-47
required to hold	Length 250mm	Stainless steel	SLB-25-47
a shelf.	Length 300mm	Stainless steel	SLB-30-47
	Length 400mm	Stainless steel	SLB-40-47
		Satin chrome	SLB-30-65



Pinwall Shelf

	Size:	Finish:	Code:
Straight Shelf.	cm 120x35	Timber veneers	SLS-01-20
Curved Shelf.	cm 120x35	Timber veneers	SLS-02-20
Straight Shelf.	cm 120x35	Satin colours	SLS-01-01
Curved Shelf.	cm 120x35	Satin colours	SLS-02-01



Pinwall Centre Floor Unit

	Size:	Finish:	Code:
Metal gondola	cm 120x60x135h	Satin colours	SLCF-01-01
with timber base.		High gloss colours	SLCF-01-10
Equipment not		Timber veneers	SLCF-01-20
included.			

Pinwall Centre Floor Unit

	Size:	Finish:	Code:
Equipment not included.	cm 120x60x135h	Satin colours	SLCF-02-01
		High gloss colours	SLCF-02-10
		Timber veneers	SLCF-02-20



Pinwall Centre Floor Unit

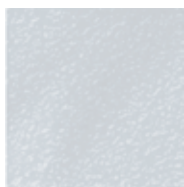
	Size:	Finish:	Code:
2-Step Parrot Rail with timber base.	cm 45x60x135h	Satin colours	SLCF-04-01
		High gloss colours	SLCF-04-10
		Timber veneers	SLCF-04-20



Standard Metal Finishes



Satin chrome



Silver



Aluminium

Standard Satin/Gloss Colours



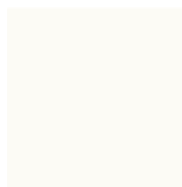
RAL Colours



Red



Black



Cream



White

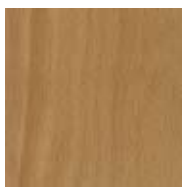
Standard Timber Veneers



Ash



Maple



Steamed Beech



Cherry



Walnut

PINWALL



JOHNSTON



Head Office

Unit 1E Bluebell Ind Est,
Dublin 12.

Tel: 00353 (0)1 4190419

Fax: 00353 (0)1 4501417

Email: sales@johnston-shopfitters.com

Web: www.johnston-shopfitters.com



SHOPFITTERS

DESIGN



MANUFACTURE



INSTALL